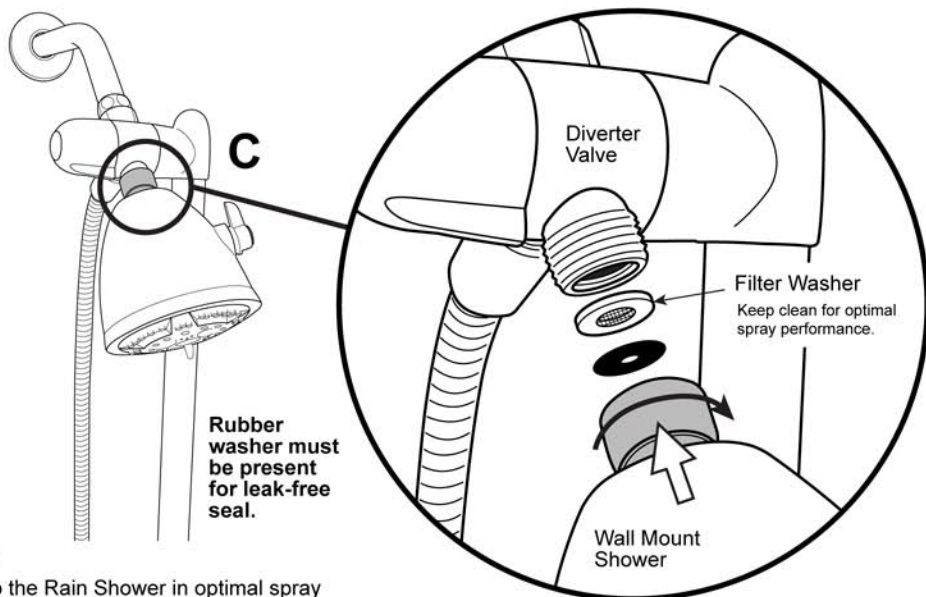


3 Connection C - Attach Wall Shower Showerhead To Diverter

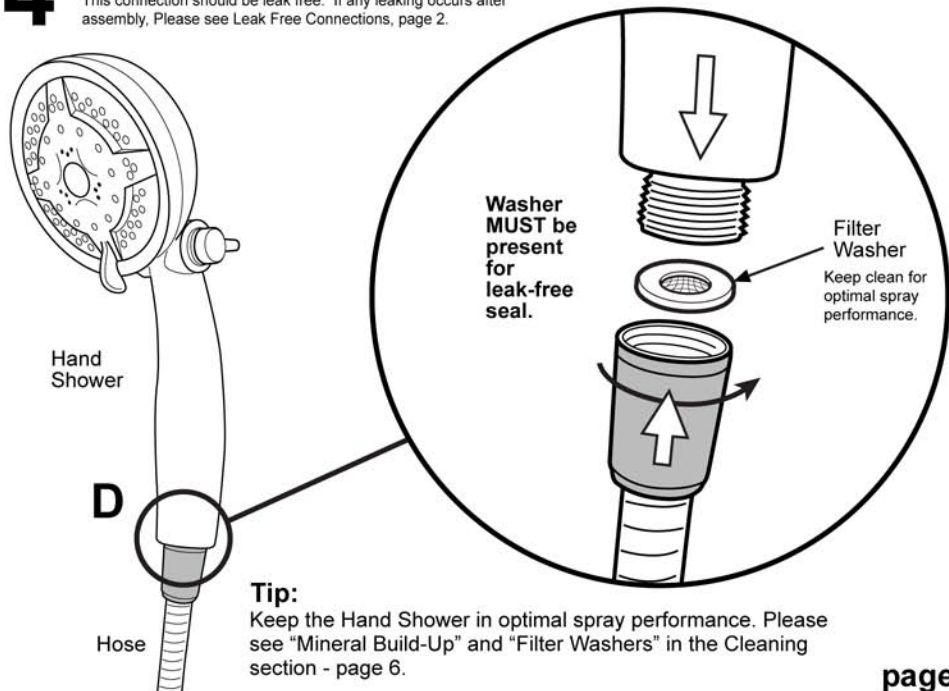
This connection should be leak free. If any leaking occurs after assembly, Please see Leak Free Connections, page 2.



Tip: Keep the Rain Shower in optimal spray performance. Please see "Mineral Build-Up" and "Filter Washers" in the Cleaning section - page 6.

4 Connection D - Attach Hose To Hand Shower

This connection should be leak free. If any leaking occurs after assembly, Please see Leak Free Connections, page 2.



Tip: Keep the Hand Shower in optimal spray performance. Please see "Mineral Build-Up" and "Filter Washers" in the Cleaning section - page 6.

OPERATION

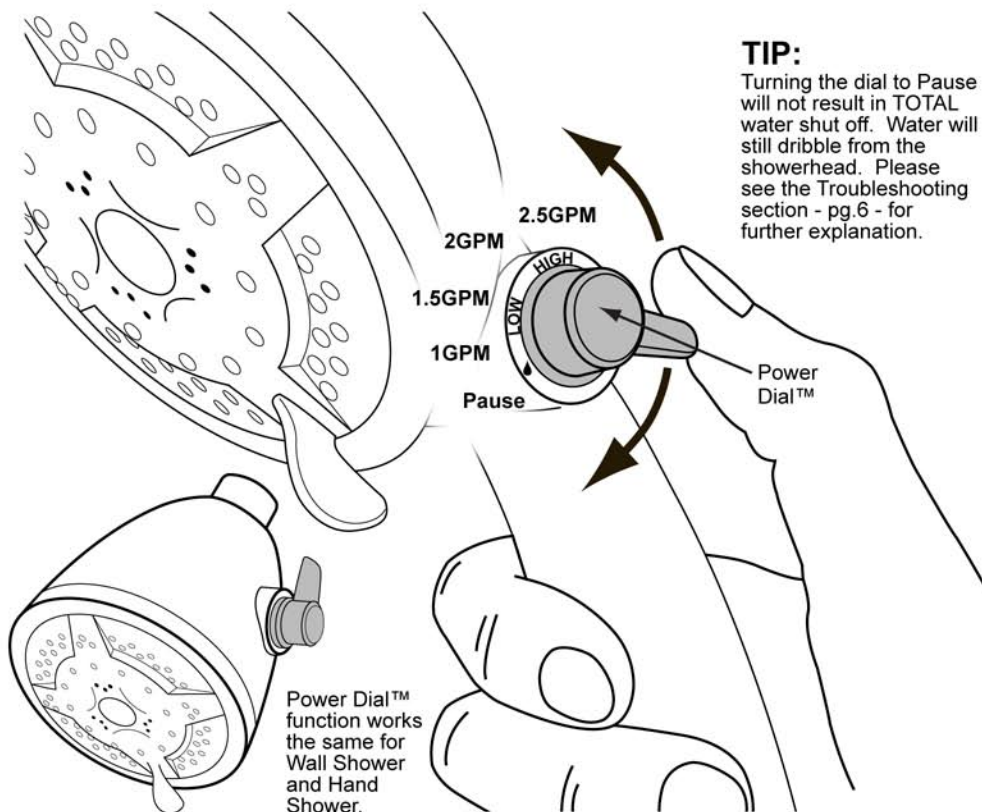
Power Dial™ - Flow Control

Turn Power Dial™ to adjust the flow to your desired level.

Turning the dial toward HIGH will result in a more forceful water flow - which will also result in more water useage and less cost savings.

Turning the dial toward Low will result in a less forceful water flow - which will also result in less water useage and more cost savings.

4
PAGE



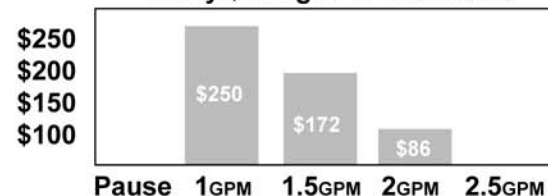
TIP: Turning the dial to Pause will not result in TOTAL water shut off. Water will still dribble from the showerhead. Please see the Troubleshooting section - pg.6 - for further explanation.

High Flow: More water / energy use.
Low Flow: Less water / energy use.

On average, a family of four with a conventional, 2.5GPM showerhead spends \$435 year* - assuming 10min. showers - on water and energy costs.

The lower the Power Dial is set and the more often it is in a lower water use position, the higher your water and energy cost savings will be.

Yearly Savings Per Flow Rate*



These energy cost savings are an average. Your actual cost savings may be lower or higher.

*Cost data based on 2009 U.S. Department Of Energy Federal Energy Management Program (FEMP) Energy Cost Calculator.

Questions? Assistance?

Do you have questions about the installation or functions of this product?

1-800-776-6364

M-F 8am to 5pm PST

ShowerTek, Inc.

www.showertek.com