

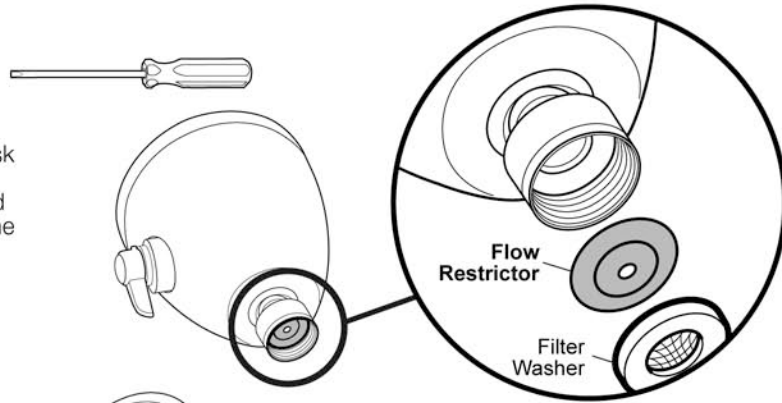
FLOW RESTRICTOR

Government law mandates that maximum water flow be limited to 2.5 gallons per minute. This product contains 2 Flow Restrictor components that are responsible for this limitation.

The Flow Restrictors may ONLY be removed for product use in low water pressure areas.

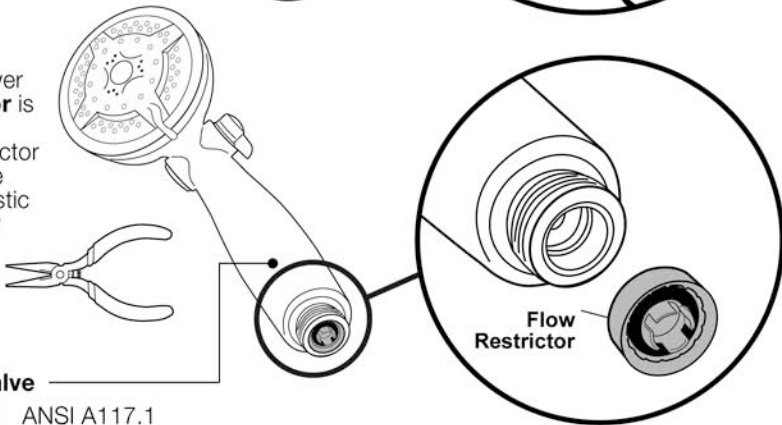
Wall Shower

The **Flow Restrictor** is a black plastic disk located in the female threaded connector on the Wall Shower Showerhead underneath the Filter Washer.



Hand Shower

The Hand Shower **Flow Restrictor** is located in the threaded connector at the base. The small, white plastic cylinder is easily pulled out for removal.



Anti Siphon Valve

ASME 112.18.1 ANSI A117.1

The Hand Shower includes an internal anti backflow valve. This valve assures that should the Hand Shower be placed in standing water, that water can not be siphoned back into the clean water in your home's plumbing. This valve should NOT be removed from the Hand Shower.

PREPARATION

Remove Existing Showerhead

Your existing showerhead may be screwed tightly to your wall shower pipe - a wrench or pliers may be required to unscrew it. Take care not to damage the shower pipe - especially the screw threads - when removing the existing showerhead.

1. Unscrew existing showerhead.



Tip: Placing a bath towel under your work area may eliminate any damage to your tub or shower due to accidentally dropped tools or showerheads.

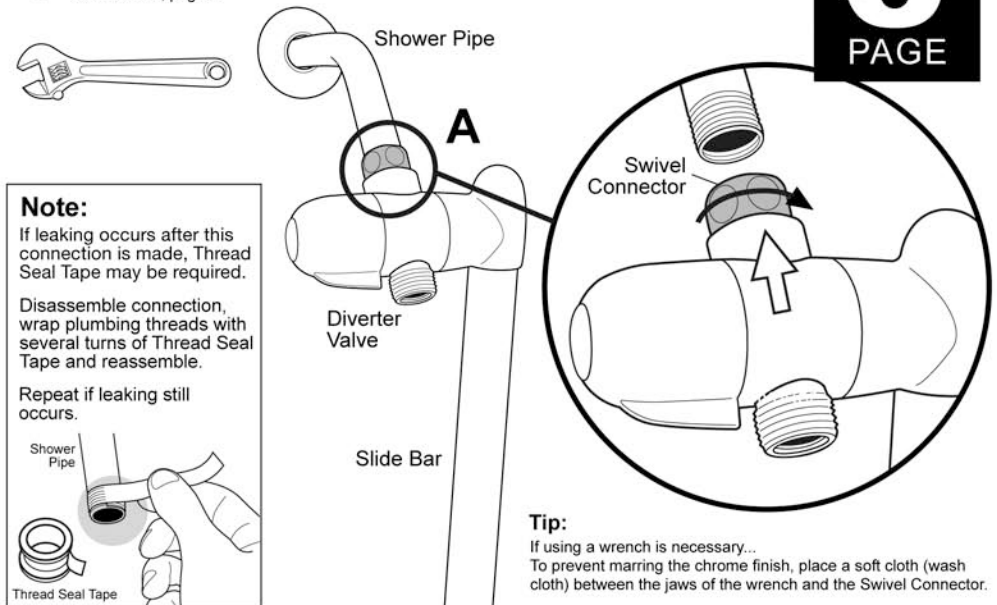
2. Clean Shower Pipe threads

Remove any remaining thread seal tape, putty or mineral build-up from the threads and open-end of the shower pipe. The threads should be bare and clean.

ASSEMBLY

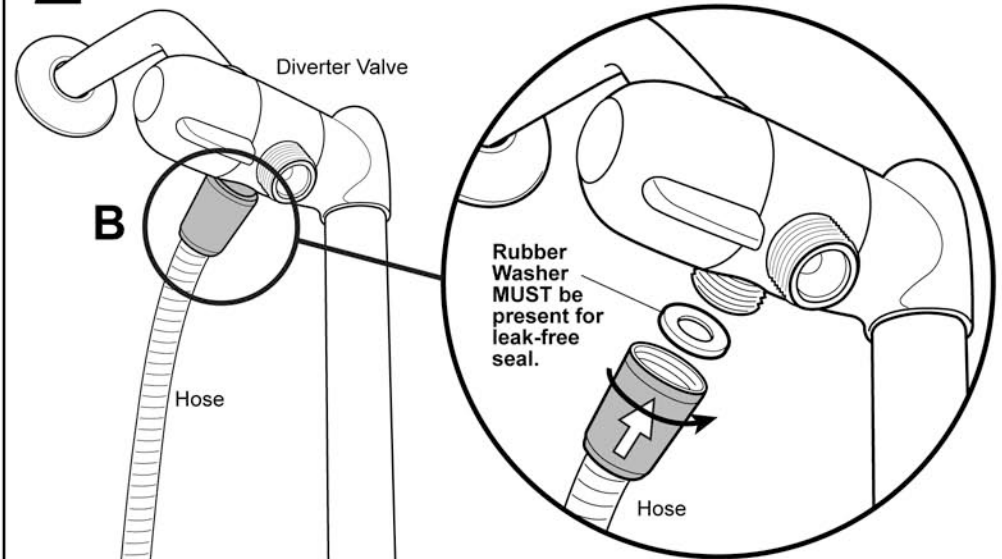
1 Connection A - Attach Slide Bar To The Shower Pipe

This connection should be leak free. If any leaking occurs after assembly, please see Leak Free Connections, page 2.



2 Connection B - Attach Hose To Diverter Valve

This connection should be leak free. If any leaking occurs after assembly, Please see Leak Free Connections, page 2.



Questions? Assistance?

Do you have questions about the installation or functions of this product?

1-800-776-6364

M-F 8am to 5pm PST

ShowerTek, Inc.

www.showertek.com